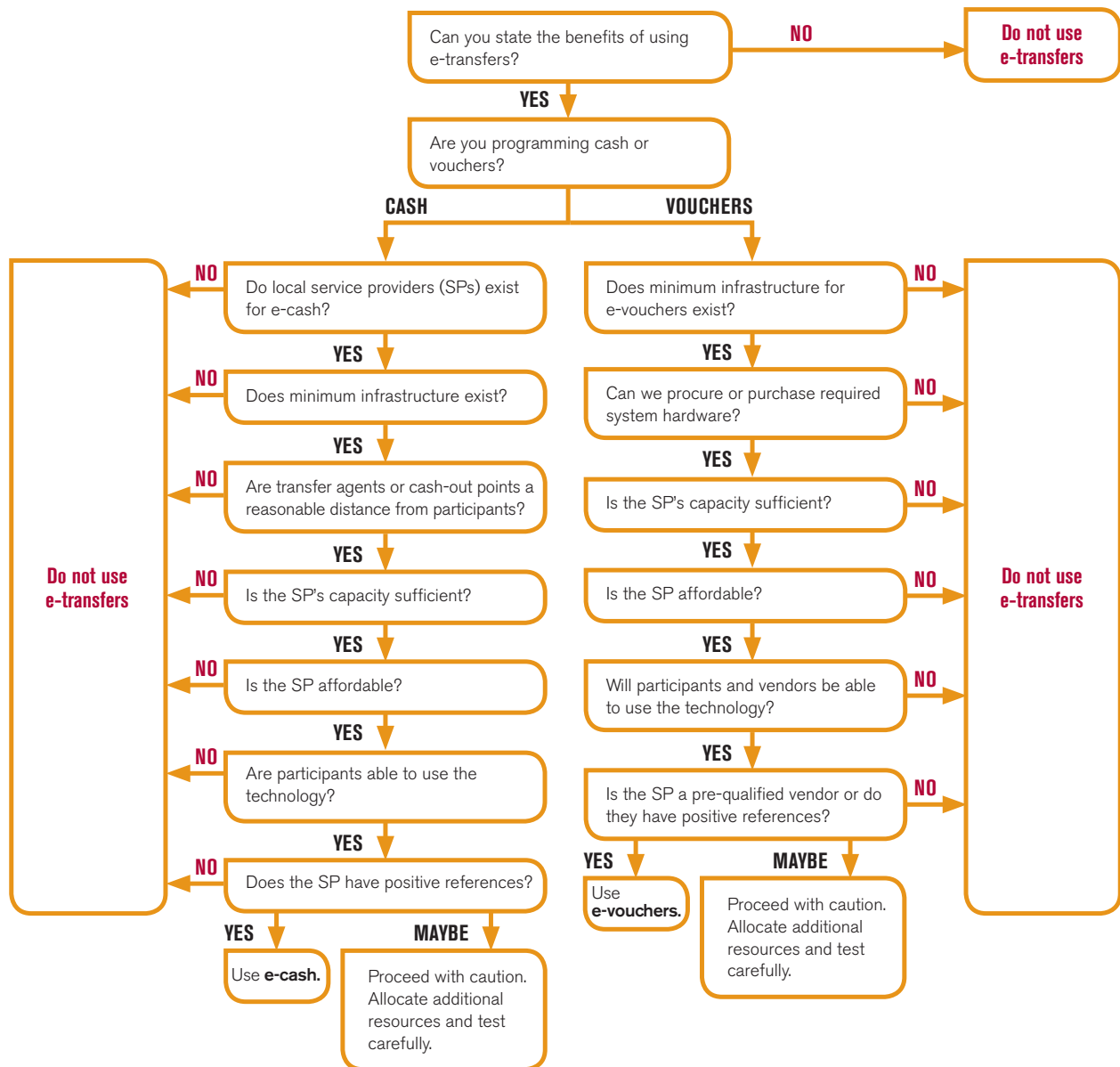


## DECISION TREE

You have already used the decision tree in the CTP Methodology Guide<sup>20</sup> to determine if your program's objectives are best met through transferring cash or vouchers. Now, you can use the decision tree below to help determine whether to use e-transfers. If you have trouble answering any of the questions in this tree, refer back to the assessment tools covered previously.

Please remember that this decision tree covers common e-transfer considerations. It does not address all factors that could influence your decision.



20 The CTP Methodology Guide, <https://mcdl.mercycorps.org/gsd/docs/CTP1MethodologyGuidewAnnexes.pdf>.